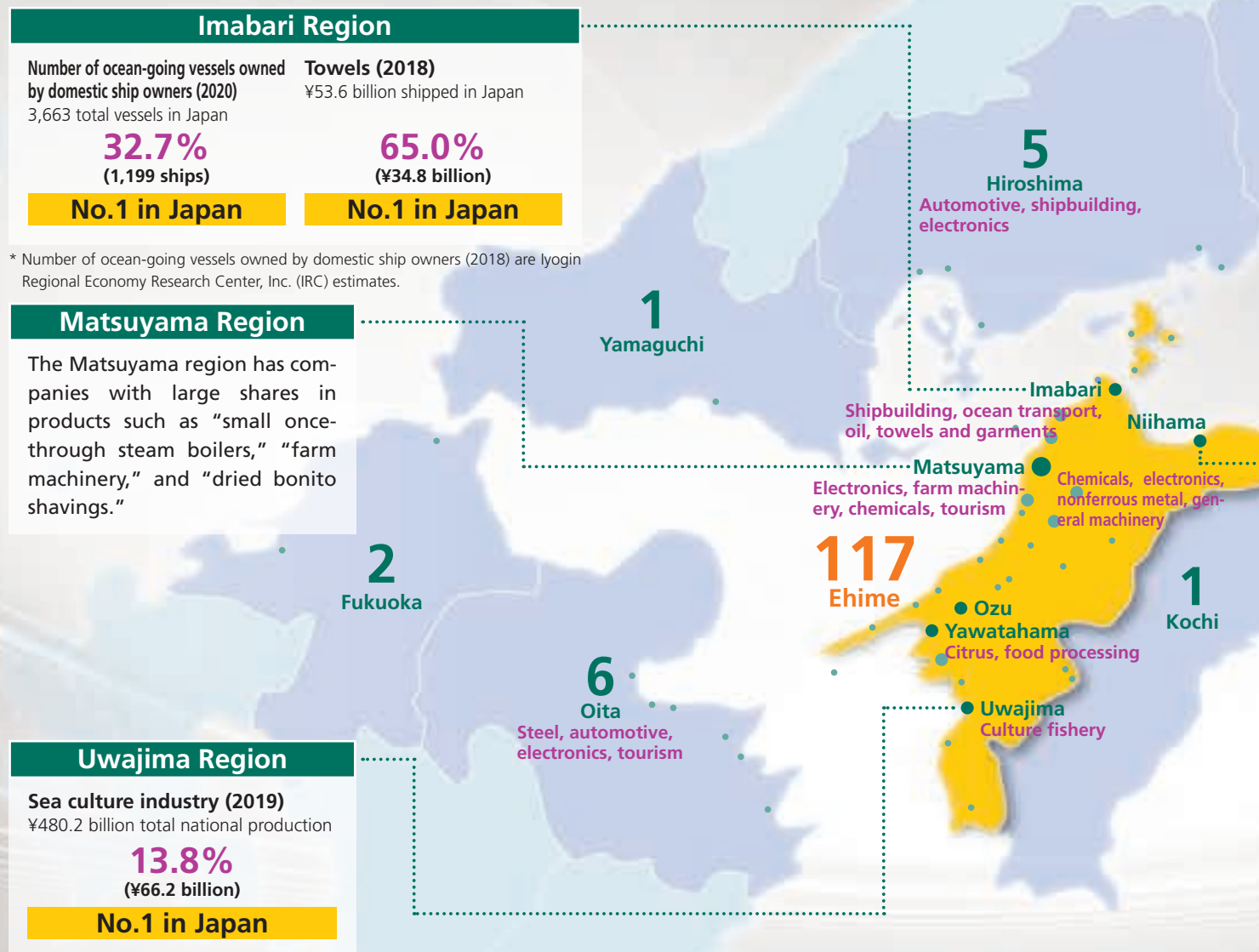


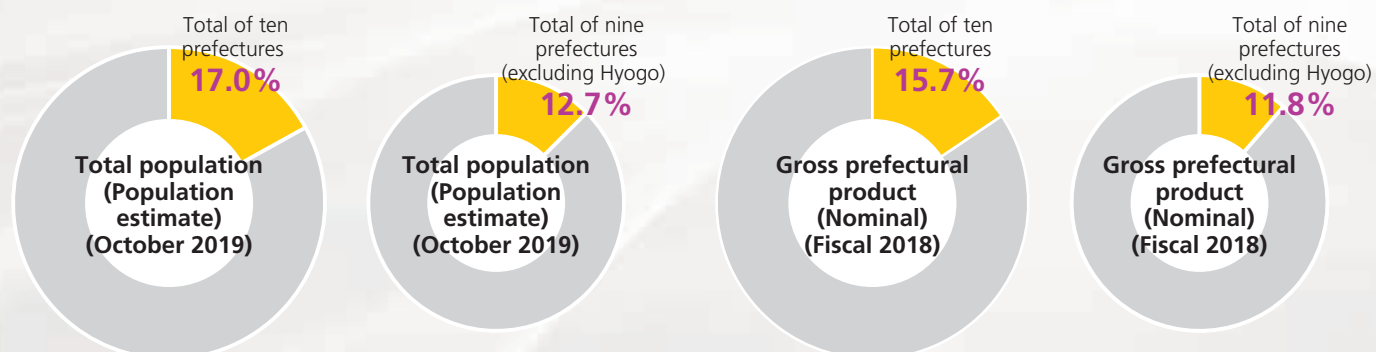
## Our Operating Area

### Domestic Branch Network

The No. 1 regional bank in terms of broad regional coverage, Iyo Bank's network consists of 149 branches located in 13 prefectures (as of March 31, 2021).



### Economic Indicators of the Setouchi Region



(Prepared based on various statistical data)

## Main Industries in Ehime Prefecture

- Industries with top national share concentrated in each region
- Manufactured product shipments from Ehime Prefecture totaled ¥4.3 trillion (45% of Shikoku) in 2018



## Industrial Structure of the Setouchi Region

- The Setonaikai coastal region has established various industrial structures

### Shikokuchuo Region

**Pulp and paper industry (2019)**  
¥7,679.3 billion shipped in Japan

**7.2%**  
(¥570.2 billion)

**No.2 in Japan**

### Niihama Region

**Manufactured product shipments (2018)**

**¥1,740.4 billion**

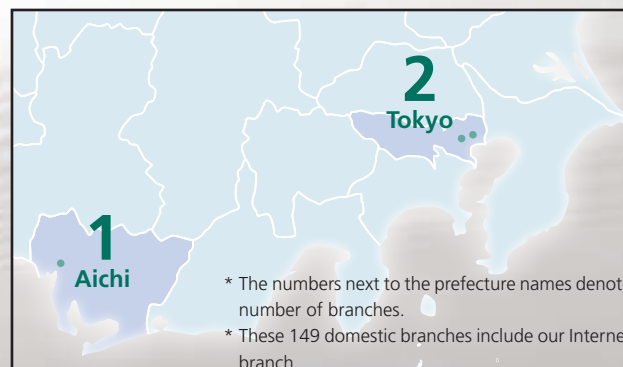
**Approx. 41%** of shipments of manufactured products in Ehime

As a corporate town under the Sumitomo Group, nonferrous metal, chemicals, steel, machinery and equipment are concentrated particularly in the Niihama region.

## No. 1 Market Share in Ehime

About Ehime Prefecture

• Area	5,676 km <sup>2</sup> (As of January 1, 2021)
• Population	1,324,882 (As of July 1, 2021)
• Number of households	601,809 (As of July 1, 2021)



## Strengthen Measures Toward Regional Vitalization through the "Shikoku Alliance"

- Formed the "Shikoku Alliance," a comprehensive alliance between four regional banks aiming for revitalizing the Shikoku region in November 2016
- Announced key measures and the logo in April 2017

**The region, customers and the four banks will sustainably grow and develop**

**Iyo Bank**

**Build**  
Support industrial development

**Foster**  
Support the formation of financial assets

**Shikoku Bank**



**SHIKOKU ALLIANCE**

**Cooperate**

**Hyakujushi Bank**

**Utilize**  
Shikoku resources branding

**Connect**  
Support network expansion

**Awa Bank**